



Navy Gold Coast Conference Ship Repair – Opportunities for Industry Panel

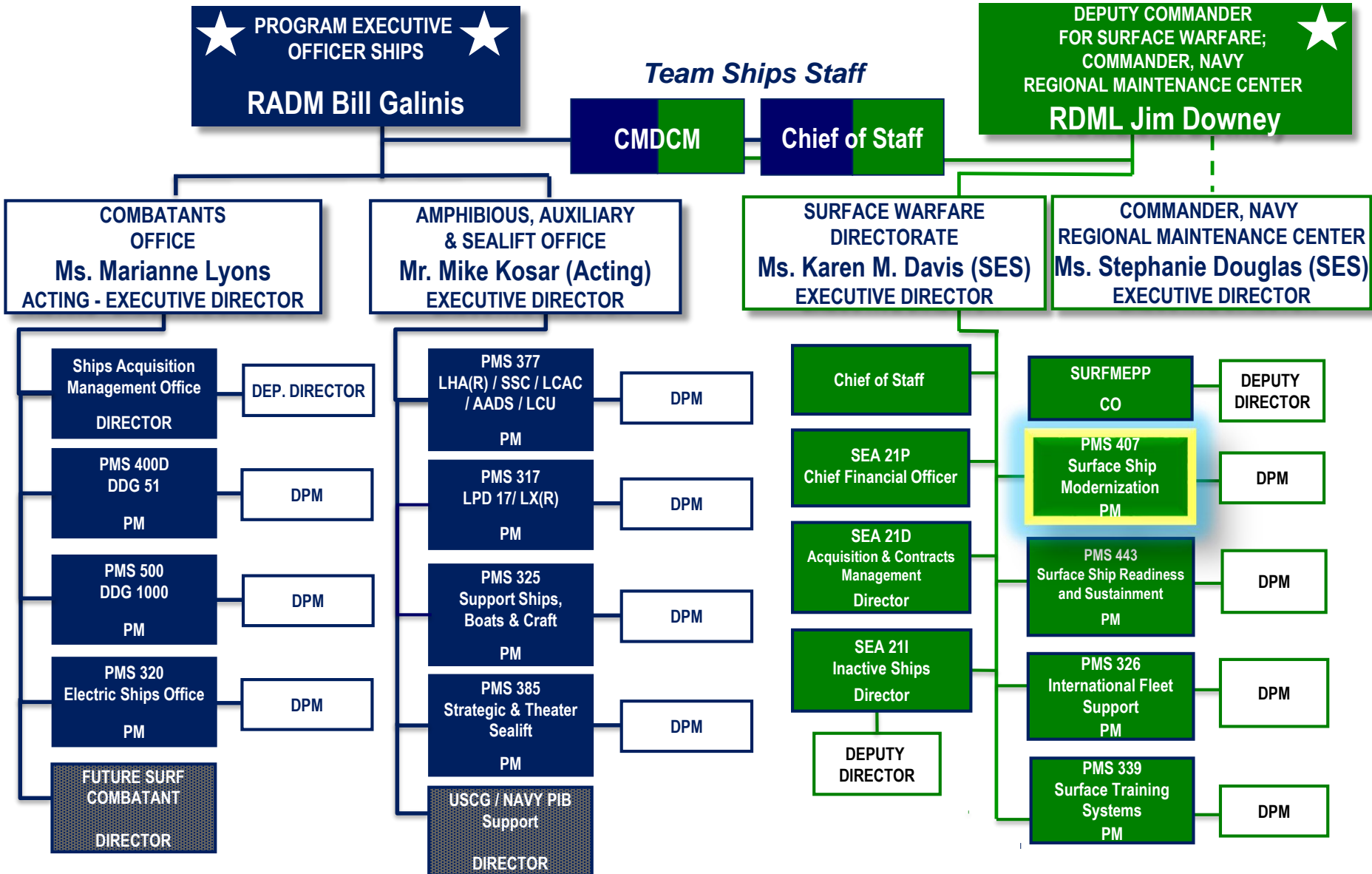
8 August 2018



Presented by:
Evan Littig
Deputy Program Manager
Surface Ship Modernization (PMS 407)



Team Ships Organization





Availability Execution Concentration Areas



Pacific Northwest

• Complex Lot I FY18

- General Dynamics NASSCO
- Pacific Ship Repair
- Vigor

• Non Complex Lot II (SBSA) FY18

- Delphinus Engineering
- Pacific Ship Repair
- Propulsion Controls
- Tecnico Corporation

San Diego, CA

• Complex MAC-IDIQ FY16

- BAE Systems
- General Dynamics NASSCO
- Continental Marine

• Non Complex MAC-IDIQ (SBSA) FY17

- Controls Engineering
- East Coast Repair
- Epsilon Systems
- Marine Group Boat Works
- Pacific Ship Repair
- Propulsion Controls Engineering
- South Coast Welding

Pearl Harbor, HI

- TBD

Norfolk, VA

• Complex MAC-IDIQ FY16

- BAE Systems
- General Dynamics NASSCO
- Marine Hydraulics (MHI)

• Non Complex MAC-IDIQ(SBSA) FY17

- Advance Integrated Technology
- Auxiliary Systems, Inc.
- Colonna's Shipyard
- Continental Tide Defense Systems
- East Coast Repair and Fabrication
- Epsilon System Solutions
- LPI Technical Services
- Lyons Shipyard
- Marine Hydraulics
- Tecnico Corporation

Mayport, FL

• Complex Lot I FY17

- BAE Systems
- Colonna's Shipyard
- General Dynamics NASSCO

• Non Complex Lot II FY17

- BAE Systems
- Colonna's Shipyard
- East Coast Repair and Fabrication
- General Dynamics NASSCO
- North Florida Shipyard
- Tecnico Corporation





Potential Areas of Small Business Participation



✓ Planning (work spec development)

- CG/DDG (QED)
- LHA/LHD (QED)
- LPD/LSD (QED)
- MCM/PC (RMC)
- LCC (SRF)

✓ Drawing Development

- CG/LPD/some LHA/LHD (HII)
- DDG (BIW)
- LHA/LHD (NNSY)
- LSD/LCC/MCM/PC (PSNSY)

✓ LLTM Procurement, Kitting, Shipping & Storage

- CG/LPD (HII)
- DDG (BIW)
- LHA/LHD/LSD (RMC C500/C400)
- MCM/PC (NNSY)
- LCC (SRF)

✓ Alteration Installation Teams (AITS)


- All ship classes (NSWC Philadelphia)
- DDG/CG (NAWC-AD)
- Amphibious Ships (SPAWAR Charleston)

✓ Pre-Fabrication (Electrical)

- DDG (BIW)
- CG (HII)

✓ Pre-Fabrication (Structural)

- CG (HII)
- DDG (NAWC-AD/BIW)

- Step 1:  Contact Me
- Step 2: Provide information on your product line
 - I will attempt to identify potential sources of business
 - If requested, I will attempt to facilitate an engagement with government program managers or their representatives
- Step 3: Continue dialogue as needed